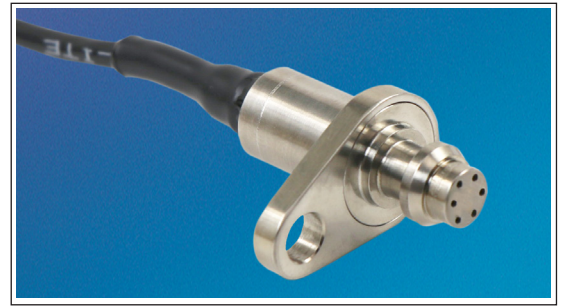




FLANGE MOUNT ULTRAMINIATURE 5V OUTPUT PRESSURE TRANSDUCER WITH INTEGRATED TEMPERATURE SENSOR

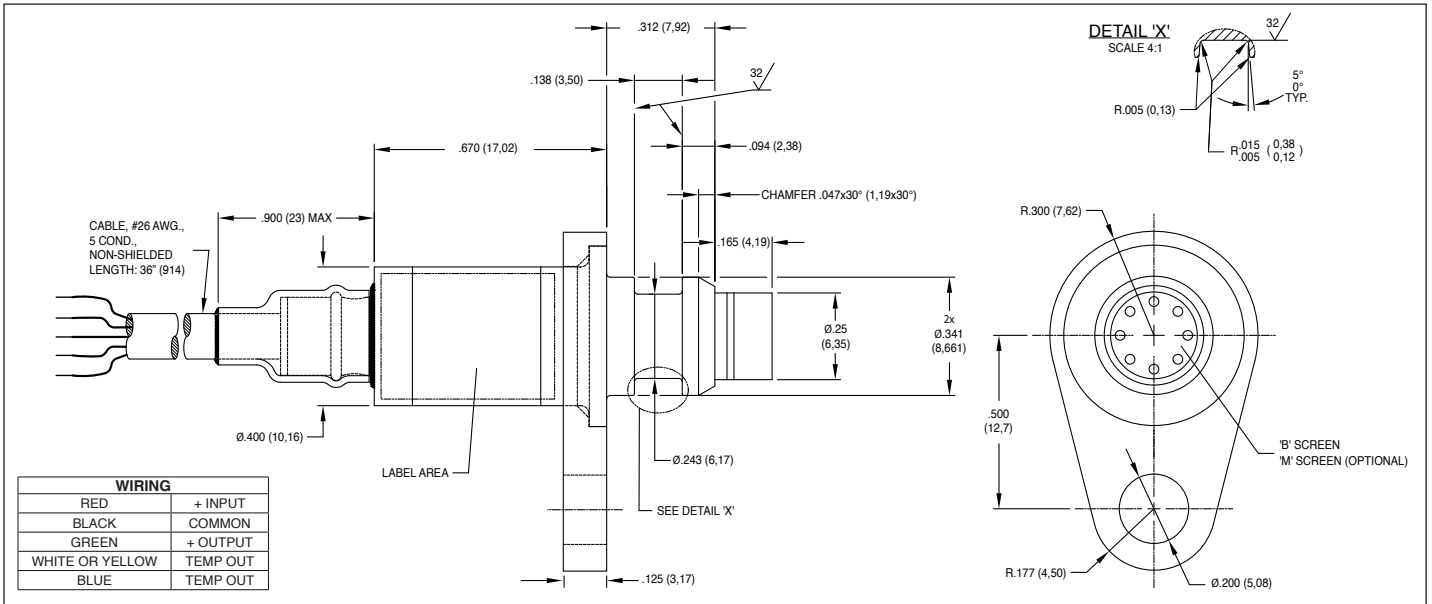
KZSM/T-400 SERIES

- Combined Pressure and Temperature Capability
- Robust Construction
- Excellent Long Term Stability
- Patented Leadless Technology VIS[®]
- Designed For Industrial And Automotive Applications



The KZSM/T-400 is a miniature flange mount pressure transducer/platinum RTD combination. The pressure transducer utilizes a patented silicon on silicon design. The integrated platinum RTD is used to sense media temperature. The pressure and temperature devices are designed to operate independently. All wetted parts of the transducer are compatible with most automotive fluids.

For Installation Drawing, refer to **Installation Standard Series**, Page 3.



	10	20	50	100	250	350 BAR
INPUT	Pressure Range	145	290	725	1450	5075 PSI
	Operational Mode	Absolute, Sealed Gage				
	Over Pressure	1.5 Times Rated Pressure to a Maximum of 7500 PSI (517 BAR)				
	Burst Pressure	3 Times Rated Pressure to a Maximum of 7500 PSI (517 BAR)				
	Pressure Media	Any Liquid or Gas Compatible with 15-5 S/S, 316 SS, Inconel 625 and Kovar				
	Maximum Electrical Current	25 mA				
	Rated Electrical Excitation	8 to 16 VDC				
	RTD Excitation	0.3mA (1mA Max.)				
OUTPUT	Full Scale Reading	4.5V ± 1.5% (3 Wire System Single Ended Output)				
	Residual Unbalance	0.5V ± 75mV				
	Output Impedance	<1000 Ohms				
	RTD	1000 Ohms Platinum, DIN EN 60751 Tables, Class A (65% Response Time 8.6 Seconds Max.) in Liquid				
	Bandwidth (-3dB)	DC to 3 KHz				
	Combined Non-Linearity, Hysteresis and Repeatability	± 0.1% BFSL (Typ.), ± 0.25% BFSL (Max.)				
	Resolution	Infinitesimal				
	Insulation Resistance	100 Megohm Min. @ 50 VDC				
ENVIRONMENTAL	Operating Temperature Range	-67°F to +365°F (-55°C to +185°C)				
	Compensated Temperature Range	+68°F to +347°F (+20°C to +175°C)				
	Total Error Band (Excluding End Points)	± 1% FSO (Max.)				
	Linear Vibration	50g Peak, Sine 130-5000 Hz. (Max.)				
	Mechanical Shock	20g half Sine Wave 11 msec. Duration				
PHYSICAL	Electrical Connection	5 Conductor 26 AWG Non-Shielded Cable 36" (914) Long				
	Weight	15 Grams (Nom) Excluding Cable				
	Pressure Sensing Principle	Fully Active Four Arm Wheatstone Bridge Dielectrically Isolated Silicon on Silicon				

Note: Custom pressure ranges, accuracies, mechanical configurations and RTD resistance available. Dimensions are in inches. Dimensions in parenthesis are in millimeters. All dimensions nominal. Continuous development and refinement of our products may result in specification changes without notice. Copyright © 2024 Kulite Semiconductor Products, Inc. All Rights Reserved. Kulite miniature pressure transducers are intended for use in test and research and development programs and are not necessarily designed to be used in production applications. For products designed to be used in production programs, please consult the factory.