

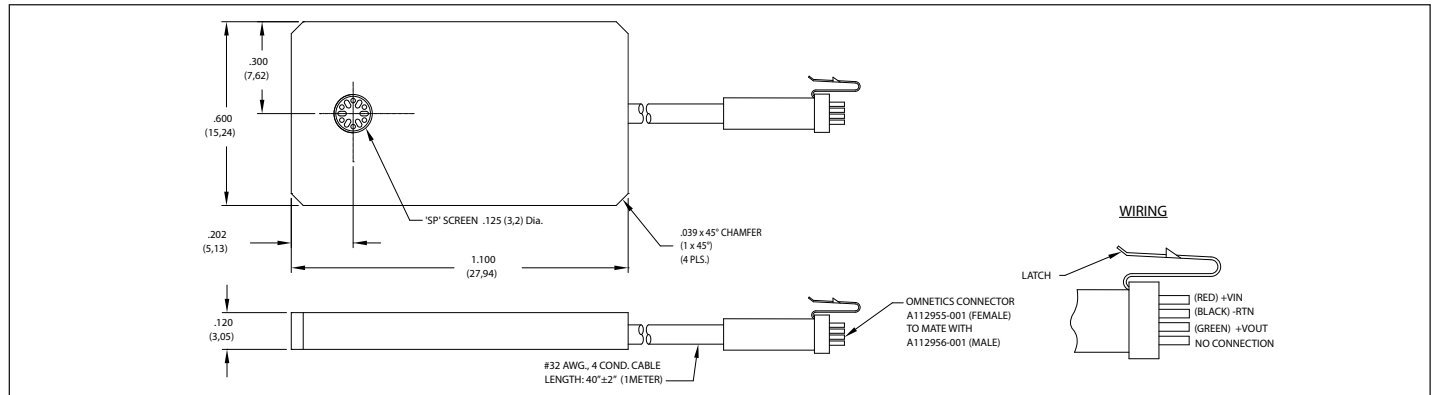
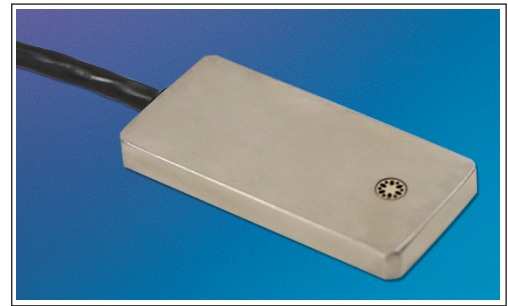


MINIATURE 5 VDC OUTPUT DIGITALLY CORRECTED FLATPACK PRESSURE TRANSDUCER

LQ-DC-600 SERIES

- Wind Tunnel, Flight Test
- 5 VDC Output
- Moisture Protected
- High Accuracy Digital Correction
- Silicon on Silicon Ingegrated Sensor **VIS**®

The LQ-DC-600 series transducers are an excellent solution for Wind Tunnel and Flight Test pressure measurement applications. Their light weight and flat packaging makes them especially suitable for direct adherence to test parts where other means of pressure installation are undesirable or not possible. These transducers incorporate the latest Kulite patented technologies in pressure sensor development. The Digitally Corrected output of these transducers enables them to have accuracies down to .5% TEB over a fairly wide temperature range.



INPUT	Pressure Range	1 15	1.7 25	3.5 50	7 100	
	Operational Mode	Absolute				
	Over Pressure	2 Times Rated Pressure Range				
	Burst Pressure	3 Times Rated Pressure Range				
	Pressure Media	All Non Conductive, Non Corrosive Liquids or Gases				
	Rated Electrical Excitation	12 ± 4 VDC				
	Maximum Electrical Current	25 mA				
OUTPUT	Output Impedance	50 Ohms (Typ.)				
	Full Scale Output (FSO)	4.5 V				
	Residual Unbalance	0.5 VDC				
	Total Error Band	± 0.5% (Typ.) <i>(End Point Settings, Combined Non-Linearity, Hysteresis, Repeatability And All Thermal Effects Included)</i>				
	Resolution	Infinitesimal				
	Frequency Response	DC to 2500 Hz				
	Acceleration Sensitivity % FS/g Perpendicular	5.0x10 ⁻⁴	3.0x10 ⁻⁴	1.5x10 ⁻⁴	1.0x10 ⁻⁴	6.0x10 ⁻⁵
ENVIRONMENTAL	Insulation Resistance	100 Megohm Min. @ 50 VDC				
	Operating Temperature Range	-40°F to +250°F (-40°C to +125°C)				
	Compensated Temperature Range	+50°F to +212°F (-10°C to +100°C) Other Ranges Quoted on Request				
	Linear Vibration	20g Peak, Sine 10-2,000 Hz				
PHYSICAL	Mechanical Shock	20g Half Sine Wave 10 msec. Duration				
	Electrical Connection	4 Conductor 32 AWG Cable 1 Meter (40") Long Terminated with Omnetics Connection A112955-001 to Mate with A112956-001				
	Weight	5 Grams (Nom.) Excluding Cable				
	Sensing Principle	Fully Active Four Arm Wheatstone Bridge Dielectrically Isolated Silicon on Silicon				

Note: Custom pressure ranges, accuracies and mechanical configurations available. Dimensions are in inches. Dimensions in parenthesis are in millimeters. All dimensions nominal. (B) Continuous development and refinement of our products may result in specification changes without notice. Copyright © 2018 Kulite Semiconductor Products, Inc. All Rights Reserved. Kulite miniature pressure transducers are intended for use in test and research and development programs and are not necessarily designed to be used in production applications. For products designed to be used in production programs, please consult the factory.