



DIFFERENTIAL PRESSURE TRANSDUCER

XTL-3-375 (M) SERIES

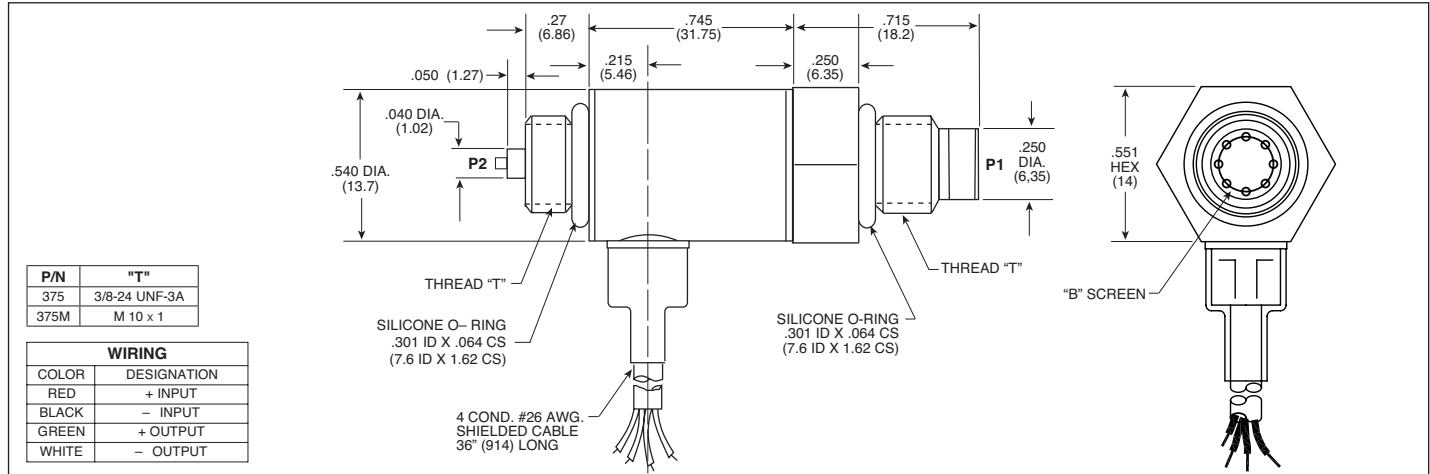
- Robust Construction
- Automotive and Flight Test Applications
- Patented Leadless Technology **VIS**[®]

The XTL-3-375 series is a non-amplified differential transducer. The Kulite patented leadless sensing element is extremely accurate even at low pressures making the XTL-3-375 ideal for low pressure differential measurements in automotive and flight test applications.

Part performance not guaranteed if used in water.



Kulite recommends the **KSC Series** of signal conditioners to maximize the measurement capability of the XTL-3-375 transducer.



INPUT	Pressure Range	0.7 10	1.0 15	1.7 25	3.5 50	5 75	7 100	10 150	14 200	17 250	21 BAR 300 PSI	
	Operational Mode	Differential										
	Over Pressure	2 Times Rated Pressure										
	Burst Pressure	3 Times Rated Pressure										
	Line Pressure	10 Times Rated Pressure (Max.)										
	Pressure Media	All Nonconductive, Noncorrosive Liquids or Gases (Most Conductive Liquids and Gases - Please Consult Factory) (All Media May Not Be Suitable With O-Ring Supplied)										
	Rated Electrical Excitation	10 VDC/AC										
	Maximum Electrical Excitation	12 VDC/AC										
	Input Impedance	1000 Ohms (Min.)										
	Output Impedance	1000 Ohms (Nom.)										
OUTPUT	Full Scale Output (FSO)	100 mV (Nom.)										
	Residual Unbalance	± 5 mV (Typ.)										
	Combined Non-Linearity, Hysteresis and Repeatability	± 0.1% FSO BFSL (Typ.), ± 0.5% FSO (Max.)										
	Resolution	Infinitesimal										
	Natural Frequency of Sensor Without Screen (KHz) (Typ.)	175	200	240	300	340	380	440	500	550	575	
	Acceleration Sensitivity % FS/g Perpendicular	1.0x10 ⁻³	6.5x10 ⁻⁴	5.0x10 ⁻³	3.0x10 ⁻³	2.3x10 ⁻⁴	1.5x10 ⁻⁴	6.4x10 ⁻⁴	1.1x10 ⁻⁴	1.0x10 ⁻⁴	4.0x10 ⁻⁵	
Insulation Resistance	100 Megohm Min. @ 50 VDC											
ENVIRONMENTAL	Operating Temperature Range	-65°F to +350°F (-55°C to +175°C) Higher Temperature Ranges Available - Please Consult Factory										
	Compensated Temperature Range	-40°F to +350°F (-40°C to +175°C)										
	Thermal Zero Shift	± 1% FS/100°F (Typ.)										
	Thermal Sensitivity Shift	± 1% /100°F (Typ.)										
	Linear Vibration	20g Peak, Sine 10 to 2000 Hz										
	Mechanical Shock	20g Half Sine Wave 11 msec. Duration										
PHYSICAL	Electrical Connection	4 Conductor 26 AWG Shielded Cable 36" (914) Long										
	Weight	20 Grams (Max.) Excluding Cable										
	Pressure Sensing Principle	Fully Active Four Arm Wheatstone Bridge Dielectrically Isolated Silicon on Silicon Patented Leadless Technology										
	Mounting Torque	80 Inch-Pounds (Max.) 9 Nm										

Note: Custom pressure ranges, accuracies and mechanical configurations available. Dimensions are in inches. Dimensions in parenthesis are in millimeters. All dimensions nominal. (P) Continuous development and refinement of our products may result in specification changes without notice. Copyright © 2014 Kulite Semiconductor Products, Inc. All Rights Reserved. Kulite miniature pressure transducers are intended for use in test and research and development programs and are not necessarily designed to be used in production applications. For products designed to be used in production programs, please consult the factory.