



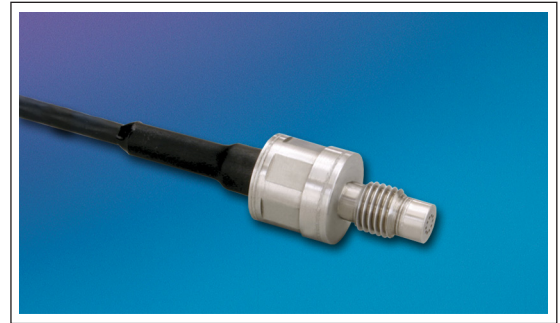
MINIATURE HIGH PRESSURE PRESSURE TRANSDUCER

HKL-1-235M SERIES

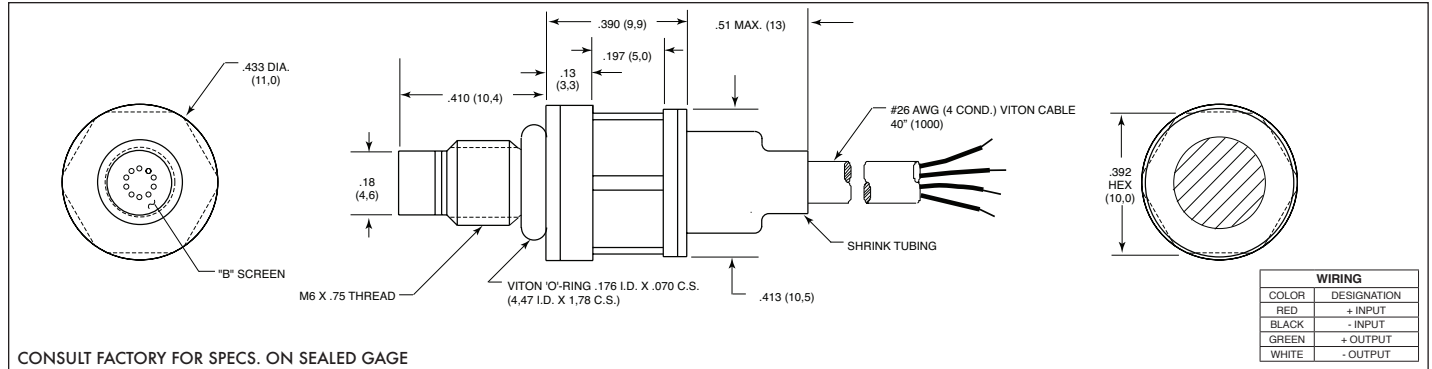
- Patented Leadless Technology VIS®
- Robust Construction
- Excellent Long Term Stability

The HKL-1-235M is a miniature threaded high pressure transducer utilizing Kulite's Patented Leadless Technology. The hexagonal head and o-ring seal make it easy to mount and simple to apply.

This advanced construction results in a highly stable, reliable and rugged instrument with all the advantages of microcircuitry: significant miniaturization, excellent repeatability, low power consumption, etc. The miniaturization process also yields a marked increase in the natural frequencies of the transducers, making them suitable for use even in shock pressure measurements. Part performance not guaranteed if used in water.



Kulite recommends the [KSC Series](#) of signal conditioners to maximize the measurement capability of the HKL-1-235M transducer.



INPUT	Pressure Range	1.7 25	3.5 50	7 100	17 250	35 500	70 1000	170 2500	250 BAR 3600 PSI		
	Operational Mode	Absolute, Sealed Gage									
	Over Pressure	2 Times Rated Pressure									
	Burst Pressure	3 Times Rated Pressure									
	Pressure Media	All Nonconductive, Noncorrosive Liquids or Gases (Most Conductive Liquids and Gases - Please Consult Factory) (All Media May Not Be Suitable With O-Ring Supplied)									
	Rated Electrical Excitation	10 VDC									
	Maximum Electrical Excitation	12 VDC									
	Input Impedance	1000 Ohms (Min.)									
OUTPUT	Output Impedance	1000 Ohms (Nom.)									
	Full Scale Output (FSO)	100 mV (Nom.)									
	Residual Unbalance	± 5 mV (Typ.)									
	Combined Non-Linearity, Hysteresis and Repeatability	± 0.1% FSO BFSL (Typ.), ± 0.5% FSO (Max.)									
	Resolution	Infinitesimal									
	Natural Frequency of Sensor Without Screen (KHz) (Typ.)	240	300	380	550	7000	1000	1500	2000		
ENVIRONMENTAL	Acceleration Sensitivity % FS/g Perpendicular	5.0x10 ⁻⁴	3.0x10 ⁻⁴	1.5x10 ⁻⁴	1.0x10 ⁻⁴	6.0x10 ⁻⁵	4.0x10 ⁻⁵	2.2x10 ⁻⁵	1.4x10 ⁻⁵		
	Insulation Resistance	100 Megohm Min. @ 50 VDC									
	Operating Temperature Range	-65°F to +350°F (-55°C to +175°C)									
	Compensated Temperature Range	80°F to +180°F (25°C to +80°C) Any 100°F Range Within The Operating Range on Request									
	Thermal Zero Shift	± 1% FS/100°F (Typ.) (± 2% FS/100°F For 25 PSI Range)									
	Thermal Sensitivity Shift	± 1% /100°F (Typ.) (± 2% /100°F For 25 PSI Range)									
	Linear Vibration	20g Peak, Sine 10 to 2000 Hz									
	Mechanical Shock	20g Half Sine Wave 11 msec. Duration									
	PHYSICAL	Electrical Connection	4 Conductor 26 AWG Viton Cable Without Shielding 40' (1000) Long								
		Weight	15 Grams (Max.) Excluding Cable								
Pressure Sensing Principle		Fully Active Four Arm Wheatstone Bridge Dielectrically Isolated Silicon on Silicon Patented Leadless Technology									
Mounting Torque		50 Inch-Pounds (Max.) 6 Nm									

Note: Custom pressure ranges, accuracies and mechanical configurations available. Dimensions are in inches. Dimensions in parenthesis are in millimeters. All dimensions nominal. (P) Continuous development and refinement of our products may result in specification changes without notice. Copyright © 2014 Kulite Semiconductor Products, Inc. All Rights Reserved. Kulite miniature pressure transducers are intended for use in test and research and development programs and are not necessarily designed to be used in production applications. For products designed to be used in production programs, please consult the factory.