



5 VDC OUTPUT DIGITALLY CORRECTED PRESSURE TRANSDUCER

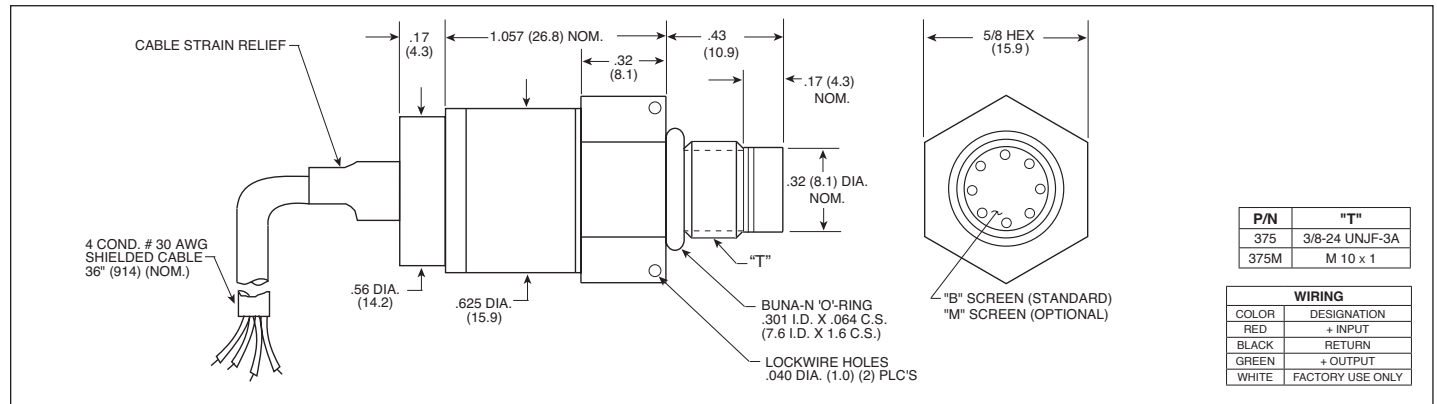
ETM-DC-375 (M) SERIES

- 5 VDC Digitally Corrected Output
- Hybrid Microelectronic Regulator-Amplifier
- All Welded Construction
- Silicon on Silicon Integrated Sensor **VIS**[®]
- Secondary Containment On Absolute And Sealed Gage Units
- Aerospace Quality Components
- Analog Output
- Intrinsically Safe Applications Available (i.e. IS-ETM-DC-375)



ETM-DC-375 Series transducers are miniature, threaded instruments. The sensing sub-assembly is protected from mechanical damage by a solid screen which has been shown to have minimal influence on the frequency response of the sensor. Incorporation of a Kulite proprietary electronics module within the main body of this product allows

for operation from an unregulated power supply ranging from 8 - 32 VDC with reverse polarity protection available upon request. The result is a stable, digitally corrected 0 to 5 VDC output signal.



INPUT	Pressure Range	17 250	35 500	70 1000	170 2500	350 5000	700 10000	1400 BAR 20000 PSI	
	Operational Mode	Absolute, Sealed Gage							
	Over Pressure	2 Times Rated Pressure to 1000 PSI (70 BAR) 1.5 Times Rated Pressure Above 1000 PSI to a Max. of 25000 PSI (1724 BAR)							
	Burst Pressure	3 Times Rated Pressure to a Max. of 25000 PSI (1724 BAR)							
	Pressure Media	Any Liquid or Gas Compatible With 15-5 PH and 316 Stainless Steel or Inconel 625 (All Media May Not Be Suitable with O-Ring Supplied)							
	Maximum Electrical Current	25 mA							
	Rated Electrical Excitation	8 - 32 VDC							
OUTPUT	Full Scale Output (FSO)	5 VDC							
	Residual Unbalance	0 VDC							
	Output Impedance	50 Ohms (Typ.)							
	Total Error Band	± 0.5% (Typ.) (End Point Settings, Combined Non-Linearity, Hysteresis, Repeatability and All Thermal Effects Included)							
	Bandwidth (-3dB)	DC to 2500 Hz							
	Resolution	Infinitesimal							
	Insulation Resistance	100 Megohm Min. @ 50 VDC							
ENVIRONMENTAL	Operating Temperature Range	-40°F to +280°F (-40°C to +140°C) (Max.)							
	Compensated Temperature Range	-40°F to +250°F (-40°C to +120°C)							
	Linear Vibration	20g Peak, Sine 10 to 2000 Hz							
	Mechanical Shock	20g Half Sine Wave 11 msec. Duration							
PHYSICAL	Electrical Connection	4 Conductor 30 AWG Shielded Cable 36" (914) Long							
	Weight	24.5 Grams (Max.) Excluding Cable							
	Pressure Sensing Principle	Fully Active Four Arm Wheatstone Bridge Dielectrically Isolated Silicon on Silicon							
	Mounting Torque	80 Inch-Pounds (Max.)							

Note: Custom pressure ranges, accuracies and mechanical configurations available. Dimensions are in inches. Dimensions in parenthesis are in millimeters. All dimensions nominal. (S) Continuous development and refinement of our products may result in specification changes without notice. Copyright © 2014 Kulite Semiconductor Products, Inc. All Rights Reserved. Kulite miniature pressure transducers are intended for use in test and research and development programs and are not necessarily designed to be used in production applications. For products designed to be used in production programs, please consult the factory.