



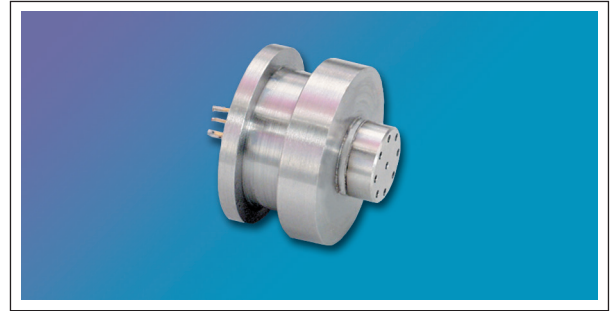
## DOWNHOLE MINIATURE PRESSURE TRANSDUCER

### IPT-25-750

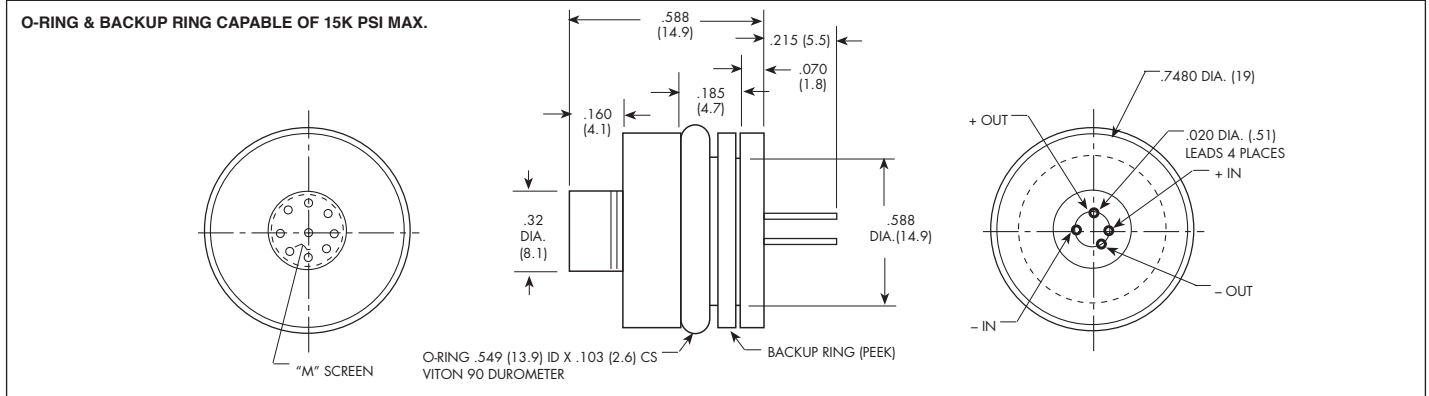
- 19mm Maximum Diameter
- Corrosion Resistant
- Stainless Steel or Inconel Housing
- Pressure Range up to 10,000 PSI
- O-Ring Seal
- Intrinsically Safe Applications Available  
(i.e. IS-IPT-25-750)



A **Low Cost** OEM component for downhole tools. Each transducer is supplied with a table of output sensitivity and bridge resistance values at various temperatures. When used with a fixed series resistor, these data provide the tool engineer with a low cost pressure sensor with a total error band of 0.25% (typical) over the entire operating temperature range of the tool.



Kulite recommends the [KSC Series](#) of signal conditioner to maximize the measurement capability of the IPT-25-750 transducer.



INPUT	Pressure Range	35 500	70 1000	170 2500	350 5000	700 BAR 10000 PSI
	Operational Mode	Absolute				
	Over Pressure	10,000 PSI (700 BAR)				
	Burst Pressure	10,000 PSI (700 BAR)				
	Pressure Media	Any Media Compatible With Inconel				
	Rated Electrical Excitation	3-5 V				
	Bridge Resistance	1500 Ohms (Nom.)				
OUTPUT	Output Impedance	1500 Ohms (Nom.)				
	Full Scale Output (FSO)	150 mV (Nom.) @ 5V Input				
	Combined Non-Linearity, Hysteresis and Repeatability	± 0.25% FSO BFSL (32°F to +350°F) (0°C to +175°C)				
	Resolution	Infinitesimal				
ENVIRONMENTAL	Natural Frequency of Sensor Without Screen (KHz) (Typ.)	1000 KHz				
	Operating Temperature Range	-40°F to +392°F (-40°C to +200°C)				
	Compensated Temperature Range	Uncompensated (See Product Description Above)				
PHYSICAL	Steady Acceleration and Linear Vibration	250g half Sine Wave 2ms				
	Electrical Connection	Four Pin or Wire Termination				
	Sensing Principle	Fully Active Four Arm Wheatstone Bridge Dielectrically Isolated Silicon on Silicon				

Note: Custom pressure ranges, accuracies and mechanical configurations available. Dimensions are in inches. Dimensions in parenthesis are in millimeters. All dimensions nominal. (K) Continuous development and refinement of our products may result in specification changes without notice. Copyright © 2014 Kulite Semiconductor Products, Inc. All Rights Reserved. Kulite miniature pressure transducers are intended for use in test and research and development programs and are not necessarily designed to be used in production applications. For products designed to be used in production programs, please consult the factory.